

# Gawler & Districts

www.gawler4wd.com.au

# 4WD Club Newsletter

## July 2024



Founded in 2002



Gawler and Districts 4WD Club Incorporated  
is an active and supporting member of  
Four Wheel Drive South Australia



Firey Sky and Yummy Bread - See the Faring Trip Inside

## INDEX

Committee Members .....	3
Schedule of Meetings .....	3
Notes from Your Committee .....	4
Coming Events .....	5
Birthday Wishes.....	10
Raffle Roster .....	10
Gawler and Districts 4WD Web Site .....	11
The Big "Bake off" – June 2024 .....	11
Guest Speakers .....	12
Where Am I.....	13
Towns of South Australia.....	13
Trip Reports .....	16
FARINA TRIP – 19 June to 25 June 2024.....	16
OUTBACK MORNING TEA – RAISING MONEY FOR THE RFDS.....	25
Answer to "Where Am I" .....	27
Sponsor Acknowledgements .....	28
Members Notice Board .....	28

# WELCOME

## to the Gawler & Districts 4WD Club

Previously known as "The Light Four Wheel Drive Club of SA Inc." this active 4WD club was founded in 2002. Members voted at the March 2008 meeting to change the club's name and meet at Gawler to give the club a more recognizable name and a more central meeting place.

It has become a very social club and has run many a successful day, weekend, long weekend and extended trips. We are a member of the Four Wheel Drive South Australia. Most meetings include a Guest Speaker and a monthly club newsletter.

***If you are a visitor to tonight's meeting, we welcome you and your family to our club. Please ask as many questions as you want. You can join us on up to 3 club outings before becoming a member. Trip Leaders run each outing and will be glad to help you with tips on four-wheel driving and how to get the best from your vehicle. If you would like to join us on any trips and enjoy what 4WD can really bring, please fill out your details on our Trip Sheets.***

The Club meets every second Friday in the month at 7.30 pm at the Gawler Elderly Centre Hall in Fourteenth Street, Gawler.

The meeting dates are shown on page 3 of this newsletter.

Annual membership fees are \$65 per vehicle/family, plus \$10 joining/late fee.



Gawler & Districts 4WD Club Inc.

**Enquiries Contacts: President or Secretary**  
**0407 604 601 (Quenton - President)**  
**0412 474 323 (Cindy – Secretary)**  
**EMAIL: [info@gawler4wd.com.au](mailto:info@gawler4wd.com.au)**  
**WEB: [www.gawler4wd.com.au](http://www.gawler4wd.com.au)**

## COMMITTEE MEMBERS

<b>PRESIDENT/PUBLIC OFFICER</b> Quenton Earl : 8523 2507 / 0407 604 601	<b>VICE PRESIDENT</b> Peter Cusick : 0421 330 104
<b>TREASURER</b> Wayne Heintze : 8523 0407 / 0432 339 213	<b>SECRETARY</b> Cindy Mulyk : 0412 474 323
<b>EDITOR</b> Sandra Harper : 8523 0889	<b>PUBLISHER</b> Peter Harper : 0410 526 317
<b>MINUTES SECRETARY</b> Cindy Mulyk Sandra Heintze	<b>SOCIAL SECRETARIES</b> Joann Wuttke : 0402 353 064 Julie Sieben : 0407 820 480
<b>TRIPS/PROPERTY LIBRARIAN CO-ORDINATOR</b> Robert Tonkin : 0421 603 767	<b>TRAINING CO-ORDINATOR</b> Peter Harper : 0410 526 317
<b>COMMITTEE MEMBER</b> Bob Mulyk	<b>ASSOCIATION DELEGATE</b> Peter Harper : 0410 526 317
<b>WELCOMING OFFICERS</b>	Sandra Heintze

## SCHEDULE OF MEETINGS

	<b>2024</b>											
<b>Meeting</b>	<b>Jan</b>	<b>Feb</b>	<b>Mar</b>	<b>Apr</b>	<b>May</b>	<b>Jun</b>	<b>Jul</b>	<b>Aug</b>	<b>Sep</b>	<b>Oct</b>	<b>Nov</b>	<b>Dec</b>
<b>General</b>		9	1	12	10	14	12	9	13	11	8	13
<b>Committee</b>				3	1	5	3		4	2		4
	31	21					31			30		

***NOTE: DEADLINE TIME - All newsletter articles to the Editor before Committee Meeting date***

### Public Holiday Dates for 2024

Labour Day Monday 7 October:

Christmas Day Wednesday 25 December, Boxing Day/Proclamation Day Thursday 26 December:

Club committee meetings commence at 7:30pm on the scheduled Wednesday, on a rotating basis, held at various committee members' homes. All club members welcome.

## NOTES FROM YOUR COMMITTEE

### Presidents Report:

---

This month's July meeting we will be learning about Kap Industries fire extinguisher custom brackets for 4WD vehicles. Australian developed and made, the Club members will receive a discount to order your bracket. Your fire extinguisher will always be at the ready!

For those who couldn't attend our "Outback Morning Tea" at the Old Cromer School to raise funds for the Royal Flying Doctor Service; Pete will be 'rattling the tin' at our meeting to collect any donations. Please give generously - we all may need their help one day!

I have a few ideas for social day trips and outings for later in the year and for 2025, but please if you have any ideas or interesting places you want to go to, please email me, or catch up with me after the meeting.

[Quenton]

### Editors Report:

---

Hello everyone and welcome to the July edition of the Newsletter.

We had a most enjoyable trip to Farina in June and thank all participants in making it so.

Just as a matter of interest, all those tracks we traversed have since been closed due to rain so we were very lucky to have completed it when we did and enjoyed the best weather - blue skies and sunshine all the way!! The nights were a bit chilly though. The willing volunteers at Farina are to be congratulated in what they achieve, especially in the bakery, and they are all so cheerful too. We will return. The trip report is in this edition of the Newsletter together with that for the RFDS morning tea.

Pete and I will not be at the next meeting as our daughter and grandchildren will be arriving at the airport after 5.00 pm so we will be collecting them and bringing them home. For those of you joining us at Wilmington, please note all the details in the Newsletter as well as those sent to you by Pete recently. We did note that the price of wood has increased and is now by the bag instead of the wheel barrow load, so if you have any to spare, please bring it along and we'll purchase more if needed. If there's anything else you would like to know, please contact us on 0410 526 317 (Pete) or 0401 300 269 (me)! Thank you. We look forward to seeing you there and have ordered some good weather, so fingers crossed!!!! PS: Don't forget to let Pete know if you would like pizzas ordered for Friday night and what kind.

Enjoy the rest of the month and I'll catch you in August.

[Sandra]

---



## COMING EVENTS

19-22 July	Christmas in July – Wilmington – Stoney Creek Caravan Park
<b>Trip Details:</b>	A couple of nights away in southern Flinders Range to celebrate Christmas in July
<b>Where:</b>	Stoney Creek Caravan Park, 23 Burnett Road, Wilmington
<b>Current Cost:</b>	Powered sites: \$38 per night for 2. Child: extra \$5 per night Unpowered sites: \$14 per person per night. Child: extra \$5 per night Ensuite cabins: \$90 per night, Bunk cabins: \$60 per night <a href="http://www.stonycreekbushcamp.com">www.stonycreekbushcamp.com</a>
<b>Meet:</b>	Stoney Creek Caravan Park, Wilmington, after lunch on Friday
<b>When:</b>	Friday 19 July 2024 – Monday 22 July 2024 (Of course, you can come early / late or leave early / late)
<b>Trip Leader:</b>	Peter and Sandra 04105260317 Pete
<b>More Info</b>	Friday night we will have pizzas, your cost, in the camp kitchen cooked by our wonderful hosts Kellie and Wayne. Might be preceded by a 'sun-downer' overlooking the gulf. Saturday, "Christmas evening" we will have a communal roast dinner cooked in the camp fire. Kris Kringle? Yep! Chance to re-gift or start a new trend. For those hanging around, a Bridle Track trip would work well for Sunday including lunch in Port Germain

### MORE NOTES ON THE PROPOSED "CHRISTMAS IN JULY" WEEKEND AT WILMINGTON 2024

This is just a broad outline of what to expect from the weekend.

Stony Creek Caravan Park is a bush style caravan park with large trees just outside Wilmington. It does have bush styled showers and flushing toilets. It also has cabins to rent and full details re costs are listed in the Newsletter and if you need any more information, please use the email address as shown.

**Extra costs will include:** pizzas on Friday night should you wish to partake, some costs associated with the Christmas dinner for meats which we will purchase and take with us, dinner at the Wilmington pub on Sunday night should you wish to stay, oh and Kris Kringle cost around \$10 or, of course, you can re-gift something you might already have. It's a fun thing not serious. **Please note that Deb will be collecting those KK gifts on Saturday!!**

It is intended to cook the meal on the camp fire and wood can be purchased from the Caravan Park or you can bring your own. **We will need some extra camp ovens to cook the meal so if you have one, please bring it along. It's better to have too many than not enough and some help on the day would be greatly appreciated.** "Bring your own veggies" are cooked in foil parcels in the campfire. There will be dessert too Christmas pudding and/or sticky date pudding, ice cream etc. Please advise if you are gluten free or if you have any other dietary requirements.

**As well as your veggies and drink**, you will also need to bring tables and chairs and Christmas decorations - as many or as few as you like - to make it look "Christmassy!!" There are some tables there but they are made of metal and have bench seats attached - I can tell you in July they are a bit cold to sit on but, hey, it's up to you. Maybe a cushion or two will make them more comfortable.

There is a large enclosed camp kitchen which does have a wood heater and it's usually lit so you don't have to sit outside in the cold. They also have some games which can be used or you can bring your own..

At the end of the Farina trip, we are hoping to check out the Caravan Park to make sure that everything noted here is available. (tick)

Come along for a fun weekend or an overnight trip - the more the merrier - and we are keeping our fingers crossed for good dry weather for the weekend too. Just add your name to the trip sheet.

<b>Sunday 4 August</b>	<b>Winter Mystery Drive</b>
<b>Trip Details:</b>	Starting at Dead Man's Pass and finishing at a secret location for lunch. Start to finish will take about 3 hours. 90 mins to get back home afterwards. Prizes awarded for quiz, photos.
<b>Where:</b>	That's the Mystery
<b>Cost:</b>	BYO Morning Tea. Own cost in hotel for lunch
<b>Meet:</b>	Dead Man's Pass Carpark
<b>When:</b>	Sunday 4 August, 0830.
<b>Trip Leader:</b>	Peter and Sandra Harper, 0410 526 317
<b>More Info</b>	Final destination is a secret, but we will give you sealed instruction in case you get lost (fail to read direction clues correctly). Trip will use bitumen and gravel roads. Gravel roads are "all weather". BYO morning tea. Lunch in pub at destination. Bring a pen, or two, to fill in the answer sheet. Bring you camera as well to capture those special photos.

**6 - 8 September  
2024****Quandong Station**

<b>Trip Details:</b>	Staying at Burra Caravan Park. Visiting Quandong Station - East of Burra
<b>Where:</b>	Burra , South Australia
<b>Cost:</b>	Friday - Sir Hubert Wilkins Talk - Donation Friday night - Burra Film Group - \$15 each membership (entitles 3 x films in 12 months) Saturday - Quandong Station - Talk, Morning Tea, Tour \$30/head. Sunday - Visiting the restored Farrell Flat Railway Station
<b>Meet:</b>	Burra Caravan Park. Friday 6 September, 2024
<b>When:</b>	Friday 6th, Saturday 7th & Sunday 8th September, 2024
<b>Trip Leader:</b>	Quenton Earl 0407 604 601
<b>More Info</b>	<p>Friday 2.00pm - Burra Town Hall. Kymm will talk to us about his life living along the Barrier Highway (including ex Publican of the Mount Bryan Hotel) and his collection of Sir Hubert Wilkins memorabilia. Friday night - Burra Town Hall - Burra Film Group - showing of classic 1953 movie "Shane". Saturday - Leave 8.00am - drive 1 3/4 hours, cross 23 stock grids to Quandong Station for 10.00am Morning Tea, Talk and Tour. Pack picnic lunch, water, hat, sturdy walking shoes/boots, etc. Suitable for AWD and 4WD. A great opportunity to learn the history and up-to-date running of an Outback Station with owner Mary Lou and Joe. Sunday - 10.00am Visit the restored Farrell Flat Railway Station with owner Dr Paul.</p> <p><a href="http://www.paxtonsquareprecinct.com.au/burra-caravan-park/">www.paxtonsquareprecinct.com.au/burra-caravan-park/</a></p> <p>Caravan Park - Ph 0488 513 101 - Please book yourself ASAP direct (ask to be near the Earl caravan; near Camp Kitchen) \$30/ night (powered site)</p> <p><a href="https://burramotorinn.com.au/">https://burramotorinn.com.au/</a></p> <p>Burra Motor Inn(Just over the creek from Caravan Park) Fri night \$128 Sat night \$145(King Bed, 2 Ad)</p>

**4-7 October 2024**  
**October long w/e**

**Mallee Tracks**

**Trip Details:** Exploring the Ngarkat Conservation Park tracks

**Where:** Ngarkat

**Cost:** Pinnaroo Caravan Park, Lot 532 Mallee Highway, Pinnaroo, SA 5304  
Phone: 0484 908 986  
From \$25.00 per night. (Suggest you contact them direct for prices as I can only find the barest minimum information online. Ed)

**Meet:** \*\*TBA\*\*

**When:** 4-7 October 2024 – October long weekend.

**Trip Leader:** Bob Tonkin  
0421 603 767

**More Info** Ngarkat Conservation Park centre track – Red Bluff,  
Border track north to Peebinga – Rock holes  
Murray Sunset National Park – Panitya North road  
Please contact Bob for further information.



**Stickers For Sale – Only \$2.00 each**  
**New design stickers complete with Web**  
**address - \$3.50 each**

**See Quenton at the General Meeting**



**Don't forget to**  
**CHECK OUT OUR SPONSORS and ADVERTS**

**Maybe you have something at home you would like to sell.**

**Contact us for details**



**29/30 November  
& 1 December  
2024**

**Christmas Party – Victor Harbor**

<b>Trip Details:</b>	Staying at Adare Camp and Caravan Park – 2 nights
<b>Where:</b>	20 Wattle Drive, Victor Harbor
<b>Cost:</b>	<p>Powered site \$50/night for 2 people + \$15 /each extra over 5 y/o</p> <ul style="list-style-type: none"> <li>- Friday night dinner – your cost food and drink</li> <li>- Walking tour – Victor Harbor, \$5/head</li> <li>- Cockle Train – return Adult \$38/head, Seniors \$34/head, Child \$19/head</li> <li>- Goolwa Museum - \$3.50 Adult, \$1.00 Child</li> <li>- Sat &amp; Sun Café – your cost (prices correct as at 4.4.24)</li> </ul>
<b>Meet:</b>	At Adar Camp and Caravan Park from 3.00 pm Friday 29 November 2024
<b>When:</b>	Friday 29, Saturday 30 November & Sunday 1 December 2024
<b>Trip Leaders:</b>	Jo and Julie
<b>More Info</b>	<p>Arrive anytime after 3,00pm Friday</p> <ul style="list-style-type: none"> <li>- Friday 6.30pm Whalers Seaside Dining, 121 Franklin Parade, Encounter Bay</li> <li>- Saturday 8.30am Guided Walk – Meet at start of Causeway (near horse tram office)</li> <li>- Saturday 10.00am Coffee at Ninos, Victor Harbor</li> <li>- Saturday 11.00am Cockle Train leaves Victor Harbor Station, Pack picnic lunch</li> <li>- Free time for lunch and discovering Goolwa, Visiting Goolwa Museum</li> <li>- Saturday 2.45pm Leave Goolwa, arriving Victor Harbor Station 3.15pm</li> <li>- Saturday Happy Hour &amp; BBQ dinner at Adare Camp Kitchen</li> <li>- Meat and dessert supplied by Club. Please bring a salad to share.</li> <li>- BYO drinks, chair, plates, cutlery etc</li> <li>- Sunday 10.00am Swagman Country Dining – morning tea, coffee and wattle seed scones, cakes, sundaes.</li> <li>- Softfoot Farm, 594 Sawpit Road, Hindmarsh Valley, leave Adare by lunch time.</li> </ul> <p><b><u>Note: to book your caravan/camping site, you must pay \$50,00 deposit ASAP via EFT (balance before 30 September 2024)</u></b></p> <p><b>Pay Gawler 4WD Club, BSB 105 109, Account 018 030 740</b> <b>Reference – Dep/your name</b></p>

**BIRTHDAY WISHES**

Gawler and Districts 4WD Club wishes to extend a Happy Birthday greeting to the following members and family:



◆◆ July ◆◆  
Pauline

**RAFFLE ROSTER**

*We ask if all members could kindly donate an item for a raffle prize each month to approx value of \$15. . Without these the raffles would have to cease. To make it fair and equitable to everyone participating in the raffle, please use the \$15 as a guide.*

*Donations can be given to the Social Committee (Joann Wuttke or Julie Sieben) any time.*

Please check below to see if your name is on the roster

July	August	September
Quenton and Deb	Wayne and Sandra	Martin
Pete and Sandra	Gary and Julie	Bob and Cindy

**Want to advertise in our Newsletter?**



Advertising Rates (12 months)	
Quarter Page	\$50
Half Page	\$100
Full Page	\$200
One off Advert : \$10	

Contact our editor [editor@gawler4wd.com.au](mailto:editor@gawler4wd.com.au) for details  
**[Fees apply and payment has to be made prior to printing]**

---

## GAWLER AND DISTRICTS 4WD WEB SITE

Have you checked out our web site lately? [www.gawler4wd.com.au](http://www.gawler4wd.com.au)

Details of when meetings are to be held, what trips and events are coming up along with useful links to lots of 4WD resources are included. Read about the latest trip report or view our photo library. Of course, you can download one of our newsletters (back to Aug 2009) including our special 10<sup>th</sup> year anniversary versions.



Check our FAC

EBOOK link as well. [www.facebook.com/GawlerandDistricts4WDClub](https://www.facebook.com/GawlerandDistricts4WDClub)

---


## THE BIG “BAKE OFF” – JUNE 2024

Congratulations to Julie Hunt with her mince (as in fruit mince) slice. Julie has promised that she will let me print the recipe for those who would like to try their hand at making it. Well done Julie!



Quenton]

**GUEST SPEAKERS**

	<p><i>These guest speakers have kindly agreed to talk with us at the following general meetings:</i></p>	
	<p><b>July</b></p>	<p>Kap Industries – Custom Fire Ext vehicle brackets</p>
<p><b>August</b></p>	<p>Cameron - Adelaide Hills 4WD Park</p>	

**FOR SALE**

**FREE MEMBER'S "FOR SALE" ADVERTISING**



Members can submit requests for a "FOR SALE" ad, free of charge, but there are some guidelines:

- (a) Maximum of 6 lines per ad (similar to a typical local newspaper ad)
- (b) Adverts can only appear for a maximum of 3 consecutive months
- (c) Must supply contact details (either a phone or email)
- (d) Editor reserves rights to reject and/or tailor any submitted adverts.

Please send full details to our editor [editor@gawler4wd.com.au](mailto:editor@gawler4wd.com.au) for inclusion in our next newsletter providing it arrives BEFORE the newsletter deadline! (See page 3)

## WHERE AM I



Answer on Page 27

## TOWNS OF SOUTH AUSTRALIA

### Quorn

Prior to European settlement the region was home to the First Nation people, the Nukunu, whose traditional lands range from near Crystal Brook to North of Quorn.

Kanyaka Station, North of Quorn was established in 1851 by Hugh Proby who was the third son of the Earl of Caryfort in Ireland. A huge property of 984 square km, the station was largely self sufficient - cows for milk, butter and cheese, pigs for bacon and a vegetable garden. Tragically Proby was drowned crossing the flooded Willochra Creek. (See Probys Grave on Arden Vale Rd -visited by the Club, March, 2024). Subsequent owners changed from cattle to sheep and ruins of the homestead, woolshed etc. can be seen off the Hawker Road.

The town was surveyed by Godfrey Walsh in 1878 and named after Quordon in Leicestershire, United Kingdom. (Quordon, UK was shortened to Quorn in 1889 Quorn was named by Governor Jervois, who named many Northern towns, after his private secretary who came from Quorndon, UK.

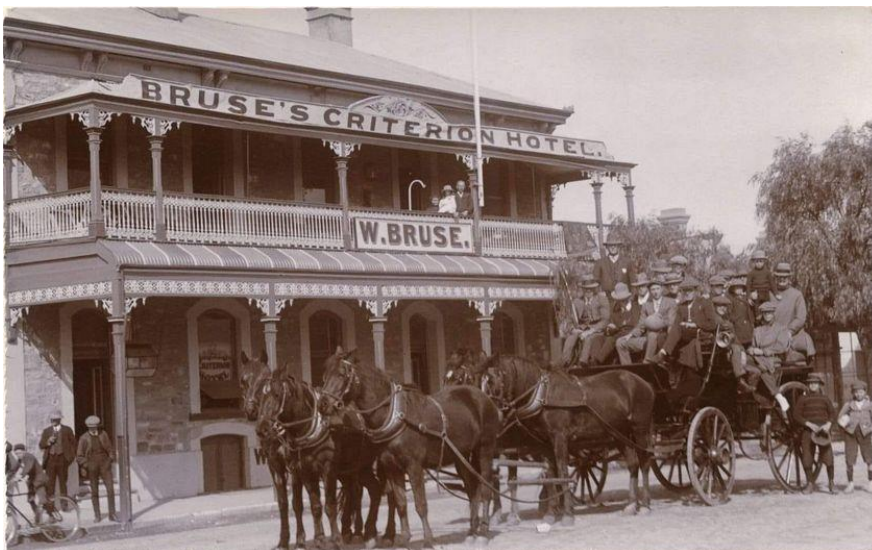
On 18th January, 1878 Governor Jervois officially launched the Great Northern Railway at Quorn. This started a great association with Quorn and the railways which continues to this

day. The line from Port Augusta to Quorn was opened in 1879 and extended North to Government Gums (Farina) in 1882, Maree in 1884, Oodnadatta in 1890 and Alice Springs in 1929. In 1923 the term "The Ghan" was first used for the railway to Quorn. Through World War II over 400 people worked for the railways in Quorn and over 1,000,000 troops passed through town. The CWA ladies provided over 1 million meals during this time. Many CWA branches around Australia sent food to Quorn which was freighted by the railways for free. The building they mostly used has been restored and is next to the present railway station. The second railway station (the current one - pictured) was built to replace the original timber one and was opened in 1915 at a cost of £2,862 of locally quarried white sandstone walls with bricks from Harradine's Clay Pit and Brick Kiln.



The establishment of the standard gauge railway to Maree bypassed Quorn and the last Ghan ran through the Pichi Richi Pass and Quorn on 11 August, 1956. In 1973 the Pichi Richi Railway Preservation Society was formed initially to preserve the unique bridges and stonework (built by Stonemasons from Wales and Cornwall) through the Pichi Richi Pass. They soon acquired operable rolling-stock and locomotives and in July this year will celebrate 50 years of tourist train operation during "Railfest" Saturday 27th and Sunday 28th July, 2024. I'll be there!

The Transcontinental Hotel, the first two storey hotel built in Quorn was built in 1878 and boasted the largest and best ventilated billiard room in the North. The Pinkerton Hotel was also built in 1878, first as a single storey hotel. The second storey was added in 1922 and the name changed to The Austral Hotel. Also on Railway Terrace was built The Criterion



Hotel. Originally it had a balcony at the front (pictured c1910) and a walkway was later built to Bruse's Hall balcony to give access to the billiard room. In 1883 the Grand Junction Hotel was built, also close by to the railway station. This once impressive two storey building, built of local stone boasted a superb card room and a billiard

room. As reported in the Advertiser on 4th July, 1883 the hotel was the largest and most grand in Quorn and the WC (Water Closet) at the end of the upper floor passage was fitted

with the "best apparatus". Governor Sir William Robinson stayed at the Grand Junction in 1883.

The R.W Foster store "The Great Northern Emporium" (pictured) was built in 1878. Richard Witty Foster was Mayor from 1890 - 1892. The store supplied the town and outlying stations with all kinds of goods including in-house dressmaking and tailoring. Today the building contains the original shop fittings including a working "Flying Fox" overhead cash system.



Many superb buildings were built in Quorn including the two storey Savings Bank of South Australia (pictured) which was built as a saddlery/residence in the early 1890's. It was bought by the bank in 1909 for £1,100 and the interior was panelled with polished cedar and the counter was edged in brass. An iron foot rail was mounted on the customer side. A strong-room was built in the cellar. Gas was used to light the premises. Alterations cost an exuberant £649, and the bank operated until 1997.

Quorn Primary School was opened in 1879. The High School was opened in 1914 - the first in the Northern area. In 1968 the Primary School moved to the High School creating an Area School.



An Aboriginal Mission was established in Quorn in 1927 known as Colebrook Home. Australian of the Year, Lowitja (Lois) O'Donoghue AC CBE DSG (1932 - 2024), spent much of her childhood at Colebrook Children's Home.

Many movies have been made in and around Quorn including The Shiralee, Sunday Too Far Away, Gallipoli, Wolf Creek, The Sundowners, The Lighthorsemen, The Last Ride and The Water Diviner.

A self guided Heritage Walk of Quorn is available from the Railway Station Visitor Centre.

[Quenton]

## TRIP REPORTS

### FARINA TRIP – 19 June to 25 June 2024

Well, what a start to a trip, unfortunately atrial fibrillation raised its ugly head on the Monday and Sandra felt really breathless. On Tuesday we arose and proceeded to get ready for the trip when Sandra's breathlessness became much worse so a trip to the Gawler Hospital Emergency Department was on the cards. We were there before 8 am and hoped that maybe we'd be out by 10 or 11 am so that the trip could go ahead as planned but the staff had other ideas and five hours later we left the ED. Pete had been keeping Di and Keith up to date with what was going on but by early afternoon it was decided that it was too late and we'd go the next morning.

#### Wednesday 19 June

Fortunately, Sandra felt much better and the AF aberration seemed to have disappeared and she felt back to normal, thank goodness!! Di and Keith met us in Gawler and we left at 8.35 am to drive straight to Roxby Downs and bypass Woomera altogether. We drove up via Auburn and Clare with very few roadworks present which is amazing after the past few years and Clare itself was very quiet when we drove through. We decided to stop in Gladstone for morning coffee in a very special hotel (Booyoolee Hotel) pointed out to us by one of the locals. It was located via a coloured underpass under the railway line. There a welcoming fire



greeted us as well as an

assortment of easy chairs to choose from. The coffee was good too.

On to Port Augusta arriving at 1.00pm so filled up with fuel and had lunch. By now there were blue skies and sunshine so any likelihood of rain was left behind. Leaving Port Augusta we turned right towards Darwin on the Stuart Highway arriving at Roxby Downs around 4.00 pm and booked

into the caravan park.

#### Thursday 20 June

Awoke to a clear cloudless and sunny morning although there was a chill wind blowing. Keryn and Brent, Gary and Julie will be driving up to join us today in Roxby. We decided to take a trip into Andamooka where we had morning coffee in the only café we could find open. It also seemed to be the school canteen. There were various items to look at and buy housed in glass cases as well as other objects to look at around the café cum hall. We decided to take the track to Lake Torrens and had a look around there. The lake was dry and we resisted the temptation to drive onto it due to the fact that someone had disturbed the black oozing mud just under the surface.







Driving back into Andamooka, Pete noticed that there was a bulge in one of Keith's tyres so Keith thought it a good idea to change the tyre before driving back to Roxby. Once that was done we had lunch at the same café where we met a lady who had lived in Andamooka for 53

years - she loved the life and the miners. She also suggested that we visit the local cemetery as some of the gravestones were set with opals. This we did and of course the cemetery had the best view - it was located on the top of a hill and the wind was very cold as we wandered around looking at the different grave sites. As well as opals, some of the graves had mining implements embedded in concrete or attached to the headstones one even had a round saw blade attached!! Around the cemetery was a wall and fence structure which included small crosses in the design.

We drove back to Roxby and at the Olympic Dam site located Bridgestone and went in to see if Keith could get a replacement tyre to use as a spare. Unfortunately, they didn't have any new ones in the size required but did have a used tyre with a plug for \$50 so Keith bought that. Seemed a safer option than one with a bulge in it!!!

Tried to buy some firelighters in Mitre 10 to no avail and were advised to go to Woolworths which we did. We also noticed a lot of the shops were empty.

Keryn and Brent, Gary and Julie joined us today but unfortunately due to illness, Wayne and Sandra had to pull out. We all got together for happy hour, then had a meal with more chat afterwards before the cold drove us all inside.



[Sandra]

### **Friday 21 June**

As we left Roxby, we filled up with fuel. It was 13 deg, the sun was out and no mud in sight, just one sticky little Roxby fly in our vehicle!!!! Gradually the native pines and flat clay pans in the low areas between the sand ridges were left behind. We headed for the Borefield Track,

passed Olympic Dam industrial site on Olympic way. The road was freshly graded, damp and perfect for travelling.



A large eagle was spotted on the roadside, followed by a metal sculptured eagle. We spotted 4 cattle drinking from a leak in the water pipe running on the ground surface, parallel to the road. The landscape now consists of low bush as far as we could see on the horizon. Soon the road was stony, dry and dusty.

More cattle were sighted intermittently, cattle grids and water tanks were frequent and a length of road works with a muddy surface.

At Sturt Creek 2 we stopped briefly for morning tea along the roadside. Hills could be seen in the distance, but the land was flat and barren, occasional sand dune, two emus and still one sticky fly!!!

A turn to the left at the T junction onto Oodnadatta Track towards Coward Springs viewing remnants of the 'Old Ghan Railway line'. Then a stop at a lookout to view the large expanse of Lake Eyre South. (thoughts were how much longer people could view the lake). The wind was lazy and very cold.

We passed Curdimurka, 20 kms to Coward Springs, another ruin, hills to the left and Margaret Siding.

Coward Springs was our lunch time destination and a good look around at our past history and heritage. This place has changed a lot in the 22 years since we last visited. Two small very quaint rustic buildings, the Date Shak selling date ice cream and other delicacies to hungry tourists. The hot spring pool is a highlight and Gary enjoyed a dip.



Then the shock!! Our Caravan looked like a demolition site.... broken glass!!!

Dust, water, drawers and cupboards open!!! 5 random screws, a hinge pin missing!!!! The water tap had come loose, mixing water and dust from under the fridge to make mud.

A quick clean up and reassessed the situation, securing however we could.....but still none the wiser was that pile of shattered glass....where did it come from?

The little sticky fly escaped to join his mates in the desert!!!!!! What a journey!!

We checked out the Station Master's office and X2 private springs, unfortunately I missed the bird walk and an ice cream due to cleaning up the van mess.

It was decided that the road to the Bubbler at Mound Springs Conservation Park was too rough and corrugated.



Back to Margaret Siding for a look (an old fettlers cottage, accommodation for railway gangs while maintaining the line).

Curdimurka Siding ruins, (dating back to 1880, consisted of Station yard, fettlers cottages and nearby Stuart Creek Bridge, water treatment plant and tower, built in 1943/44 a lime/soda softening plant used to deal with highly mineralised local water.) This is where we discovered we'd lost the fridge vent cover.

To Marree, via Algebuckina Creek, museum with twin planes. Fuel \$2.90 litre. We were surrounded by flat table topped hills and ruins. The countryside is now much greener and more animals are sighted. Cattle, roos, emus, eagles, horses, and dead roos.

Eventually onto bitumen, Outback Highway to Farina. We found an unpowered site amongst the beautiful gums in the creek. No powered sites were available. Gary and Julie travelled on to Lyndhurst to motel accommodation.

Enough excitement for one day, we settled in for the night, knowing the bakery would be calling us early next morning!!!!

[Keryn]

### Saturday 22 June

Woke to another beautiful but cold morning - 3C brrrr!!! Today we sample the bakery at Farina - the whole reason for the trip! Pete and I decided to have breakfast at the bakery and were absolutely amazed at the choices - bread, rolls, pies, buns, biscuits and assorted

cakes and pastries, drinks, souvenirs and coffee and all done by a willing bunch of volunteers. We ordered a finger bun for me and egg and bacon pie for Pete plus two coffees then sat at one of the tables and enjoyed them while waiting for everyone else to join us. As we sat there we watched a parade of vehicles and caravans leaving Farina - after visiting the bakery on the way out - and surmised that the campground must be just about empty!

Afterwards we were able to have a look at the underground bakery which was being used to bake more loaves of bread - the oven holds around 30 loaves at a time. We were told that the underground bakery stood empty for 70 years and when the hot box was lit, it burst into life and was usable. Some restoration work has been done to the oven itself by a stonemason who comes out from the UK (the oven is Scottish) and the hot box also needs some restoration work by the same stonemason which will be done soon. As well as bread, pies are



cooked in that oven. All the other baking is done in the building which has been built on the original site of Patterson's House and which largely resembles the original structure. There are portable toilets located nearby. Bought a huge muffin and delicious apple pie "for later!!"

After the bakery we wandered around Farina looking at the various sites and structures. From there we got into the cars and drove over to the train which is due for restoration at some stage and the Fettle's cottage which is the current building undergoing restoration work. The aim of the volunteers is not to re-build anything but to restore what is already standing so that those buildings don't deteriorate any further. I find this place fascinating.

(As a PS to the restoration work, I bought a book on Farina written by Rob Olson which includes photos through the years and in 2005 there are walls of the Exchange Hotel still standing, today there's just rubble where the hotel stood. Rob states that stone from the hotel has been taken to Marree to form a cairn to the desert explorer, Madigan. He also mentions that different objects from Farina are found in various parts of the state.)

A 4G Tower is going to be constructed by the end of the year - everything is in place so communication will be feasible from Farina.

Left Farina and drove to Lyndhurst where we met up with Gary and Julie. Tried to get fuel at Copley but the service station was closed as it was waiting for the new owners to arrive. Next stop was Leigh Creek for fuel and a quick drive around. Must admit it was bigger than I

expected. Gary recommended stopping at Aroona Dam for lunch - what a lovely spot. The dam wraps around in a horseshoe shape and is quite lovely and most unexpected in this very dry countryside. As a bonus there are flushing toilets.



Back to Leigh Creek to find the road to Arkaroola. This is a very good wide dirt road which wound through the many hills and creeks for about 130 kms. Got to Arkaroola and booked in, found a campsite where we were all together (apart from Gary and Julie as they were in

accommodation near the office.) Gary and Julie came and joined us for happy hour while Pete tried to get the new Darche portable fire going - firelighters and wood just didn't do it but once some newspaper was found, it took off and produced some lovely coals, however, it was a bit cold to sit outside for long so we retired to our little homes.

[Sandra]

### **Sunday 23 June**

We left camp at 9.15 on a day trip following the Mini Remarkable Road. I was delighted to see my first yellow footed rock wallaby amongst the rugged rock terrain not far from the park. Of course it was travelling in the opposite direction to us and with pen, paper, hand radio, phone and camera in hand, I had no chance to snap a photo!!!!

After turning onto the Pinnacles road and winding our way along the track we had beautiful views of the Gammon Ranges. Rock formations and yaccas growing on the Pinnacles, not seen anywhere else on this trip. We stopped for morning tea in a gorge and our curiosity was sparked to something way up on the rock face. Binoculars and long lens came out and eventually the conclusion was a metal cooking pot!!!! We will have to forever wonder how it got there!!!!



The 4 Mile track was very very dry and dusty. The foliage on the bush and in the area was showing signs of stress and imminent death without rain soon.

Two roos were spotted on our way to Bolla Bollana Springs. Travelling was slow over dry sharp, rocky creek crossings. Goat tracks indicated that there was water nearby and as we

got closer to the water hole we could hear finches. They were landing in the rocky water hole, but never staying long, and our presence made them skittish.

Next we came to the Bolla Bollana Smelter Site. We checked out the interesting dome structure (which was a kiln) and remnants of this Copper mine. We found large slabs of metal (still in place due to its weight), slag, slate, railway iron and handmade bricks.) There was



some walking and climbing when we arrived at Nooldoonooldoona waterhole, ha ha !! it was a beautiful serene places with fascinating rock formations for me to study.

Much of the native spinifex and pines were dead along this track. We surmised that there may have been a fire through the area at some time but not enough follow up rain to help regeneration to the area.

Now my writing over the rough tracks is unreadable!!! 🤔 We circled Bob Knob Hill, checked out an historic site with only a pipe emerging from the ground. The track became very rugged and almost petered out. Finally we turned back for camp as the bush started encroaching on the track.



The highlight of the day was watching the yellow footed rock wallabies come to the Arkaroola complex for a feed of pellets each evening and our tour guide gave us information about their survival following local droughts and bush fires that almost wiped them out. Now their numbers have grown to 19,000 in the area. We were then able to browse the Information Centre's interesting geological collections. The evening was complete, sitting around our camp fire 🔥 with a few drinks, discussing the verdict of the shattered glass conundrum. Apparently the oven door swung open, the fire resistant glass sheet that lines the oven door slid out, exploding onto the floor and the oven door neatly closed again!!!! Leaving a path of destruction, a dustpan full of glass found inside cupboards, drawers and a pile in front of the fridge. Mystery solved.... 24 hrs after the event!

[Keryn]

**Monday 24 June**

After discussion the night before, it had been decided to stay another night at Arkaroola, so before we all headed off to another 4WD track, we went to the office to secure another night's stay for all.

It was decided we would do the Mount Jacob Backtrack. On the way to the track, we stopped off at the Greenwood Camel Yards to have a look around.

We then turned onto the start of the track and our first stop was the Ochre Wall with all the different colours in the natural wall face when Keryn decided a little bit of



makeup would be nice.

Then a stop at the Livelys Find (Gold Mine.) A group of us decided to climb the hill to have a look down the top of the shaft where others found the lower entrance.

So back on the track and it was decided to stop for morning tea at the Jasper Twins which

were two large boulders of rock made up of several layers . We drove straight past the Welcome Mine but you could see the large mound of earth from the track.

We then came across the Welcome Pound, beautiful views but with a nice steep sweeping track to the bottom. If you look carefully you can see Peter's car at the bottom of the hill.



Next was Tillite Gorge with a short rocky track to get there.

Most of the group decided to walk the 800 metres to the Gorge. Most of the walk was along the river bed so quite easy going. We found out later that the Gorge is named after the type of rock it is made up of.

After this we entered the Mt Jacob Backtrack which was one way and for 4WD only and the meant it. The track had rocky outcrops, washaways with many up the mountains and down to the creeks, lots of bounces and "where did that track go?" as you went over the crest.



The group stopped at a creek bed for lunch under the shady gums which were rare to find.

We came across a track to a lookout and Peter decided he would check it out first but found there was no good turnaround so the rest decided the view from where we were was good enough. We completed the track and headed back to the caravan park.

Some of the group went out to look for firewood and lit another fire with everyone enjoying the warmth of it. That evening we all went for tea at the Arkaroola Village returning to the fire until bedtime.

[Di]

## Tuesday 24 June



Left Arkaroola at 9.00 am - weather perfect, blue skies and sunshine. On the way out we stopped to look at a rock formation on the right hand side of the road with the Aboriginal name "Balcanoona" meaning "old woman". Not quite sure how this particular rock formation resembled an "old woman" - I couldn't see it anyway - maybe it's where mature women met!!!

Took a left turn onto another dirt road towards Hawker then right at Blinman Road where we stopped for morning tea. We were leaving the hills around Arkaroola behind and the countryside was becoming flatter. Saw lots of goats, sheep, roos and emus some very close to or on the road. There were a few raindrops on the windscreen.

Turned left on the bitumen to Hawker and there was a drop in temperature from 19C to 14C. We decided to stop at the Flinders Food Co in Hawker for a late lunch. Unfortunately, the



kitchen was closed so the only food on offer was what was on show which did include some hot pies.

Left Hawker at 2.30 pm and headed to Wilmington where we arrived at 4.00 pm. Pete checked in at the office and made arrangements for "Christmas in July" and purchased a bag of wood. Camaraderie around the campfire ensued while trying to avoid a few raindrops. Turned on all the lights in the campfire area to see how they worked then headed off for our evening meal and retired for the night.

### **Wednesday 25 June**

While we were packing up at 7.30 am, Gary and Julie came to say their "goodbyes" as they were heading home. We left the Stony Creek Caravan Park around 8.30 am after deciding to have breakfast in Melrose. We parted company with Keryn and Brent as they were heading to Coffin Bay and Di and Keith and Pete and Sandra headed home.

Stopped off in Melrose for breakfast then headed back to Gawler via Laura, Gladstone, Georgetown, Yacka and Clare.

Took our leave of Di and Keith just outside of Gawler as they headed home along the freeway.

Thank you to everyone for your great company on the trip. We found the trip most enjoyable, achieved what was planned and hope that you enjoyed it too.

Here's to the next one.

[Sandra & Pete]

---

## **OUTBACK MORNING TEA – RAISING MONEY FOR THE RFDS**

### **HELD ON SATURDAY, 6 JULY 2020**

Deb & I opened up the Old Cromer School early to get the open fireplace going and to cook a batch of scones ready for morning tea. This building belongs to the Barossa Council, but has been restored by "The Friends of the Old Cromer School" in 2019 after the building was left

unattended for 15 years and suffered neglect, vandalism, break-ins and vermin infestation. Built in 1898 and open for the start of the school year in 1899, it remained a school until 1950. Over the years it has been used for religious ceremonies, local dance nights, meetings and more recently as tennis clubrooms. With new wiring, new ceiling, new floor and restored original fire place, it is a very comfortable building for community use for years to come. A new storage shed was built last year to house the BBQ,



extra tennis nets and bags of fire wood for sale. A separate building contains male and female toilets. Their next project will be to install a split system air conditioner and upgrade the kitchen when funds have been raised. If you would like to make a donation; I can supply you with their building fund bank details. Cromer itself once boasted an Inn and a Post Office, both now private homes. The Post Office operated from 1910 until 1944.



After enjoying a fresh batch of scones and jam and cream and a delicious spread of home-made baked goodies we sat around the table in front of the fire and enjoyed great conversation with our guests - Christine (Barossa 4WD Club) and Kay and Josie (Gawler RFDS Support Group). We all

agreed how great this little building has been restored and most of us never knew Cromer existed, but what a pleasant and scenic area!

Peter H took us on a tour of the back roads to discover the Crawford Crater. A meteor crater 8.5km long which hit Earth 35 million years ago. Who knew? You will have to ask Pete how to get there and our impressions of it!

A very pleasant sunny but cold day. Thanks all for coming. The Donation Tin will be out at our July meeting, so please give generously before we hand over the contents \$\$\$\$ to the local Gawler RFDS Support Group.

[Quenton]

## ANSWER TO "WHERE AM I"

### Jubilee Exhibition Building, North Terrace, Adelaide

Known as the most beautiful building on North Terrace, Adelaide, the Jubilee Exhibition Building was built to celebrate the 50th anniversary of Queen Victoria's accession to the throne and South Australia proclaimed a colony, was opened in 1887.

During the 1887 Adelaide Jubilee International Exhibition, 766,880 visitors (more than twice the city's population of 309,820) saw 2,200 exhibits from 26 countries. The massive cost of the exhibition was £66,000 and was completely covered by admission fees.

The building consisted of a main hall, which could seat 6,000 people, a concert hall for 800 people, and numerous other halls. It boasted a huge dome; 112 feet (34m) wide and 80 feet (24m) high, 192 feet (59m) from the ground level. One of only two Adelaide buildings with impressive domes. The other being Adelaide Arcade.

The building and the Jubilee Oval hosted the Adelaide Royal Show from 1895 until 1925 when it moved to Wayville.

The building, handed over to the University of Adelaide in 1929 was sadly demolished in 1962 and replaced by University buildings including the Napier building, possibly the ugliest building on North Terrace!

One of the Exhibition Building fountains is now outside Adelaide Arcade (see June 2024 magazine) and the other now in Creswell Gardens next to Adelaide Oval.

It is rumoured there was a railway tunnel from the Adelaide Railway Station to the Exhibition Building, but in fact the tunnel only went under King William Road.

When the Adelaide Show moved from the University site to



Wayville, the line from the station to the Exhibition Building was considered redundant, closed and the tunnel filled in. The tunnel was re-discovered in 1973 on the building of the Festival Centre and a proposal to open it up for pedestrian use was considered too costly (estimated at least \$200,000 in 1973).

All that remains is an outside staircase (behind the Napier building)(pictured), both fountains have been restored and re-located (as mentioned above) and of course the new Napier building, (pictured) built between 1958 and 1965 Yuck!!

I think you'll agree, we lost a beautiful historic building from Adelaide's streetscape.

[Quenton]

## SPONSOR ACKNOWLEDGEMENTS

### Gawler Fishing & Outdoors

48 Murray St Gawler SA 5118

Phone 08 8522 6200

[fishnout@bigpond.net.au](mailto:fishnout@bigpond.net.au)

**Club Discount with \*\*club card\*\*  
applies to all non-special items**

- \*Fishing Tackle*
- \*Fridge / Freezers*
- \*Guns & ammo*
  - \*Binoculars*
  - \*Knives*
- \*Camping gear*
- \*GPS systems*
  - \*Swags*
  - \*Marine*
  - \*Repairs*



## MEMBERS NOTICE BOARD



### \*\*\*\*\*TRIP REPORT COMPETITION\*\*\*\*\*

*It's on again.as long as we receive trip reports so please remember to take pencil and paper when out on a trip!*

*The committee has once again, decided to continue with the Trip Report competition this year to reward those who submit a Trip Report throughout the year!*

*It does not matter whether the report is long or short, serious or funny, whether you have written one or more, your name will go in the "hat" for each report that is written.*

*Winner will be drawn out of the collection of names at the end of the year either at the Christmas Show BBQ or at the AGM.*

So the more reports you write  
the better your chances of winning!

There will be a **Prize** for the lucky participant  
so please keep-on writing!!!